



**climate zone 7**  
i n s u l a t i o n

# NCC 2019

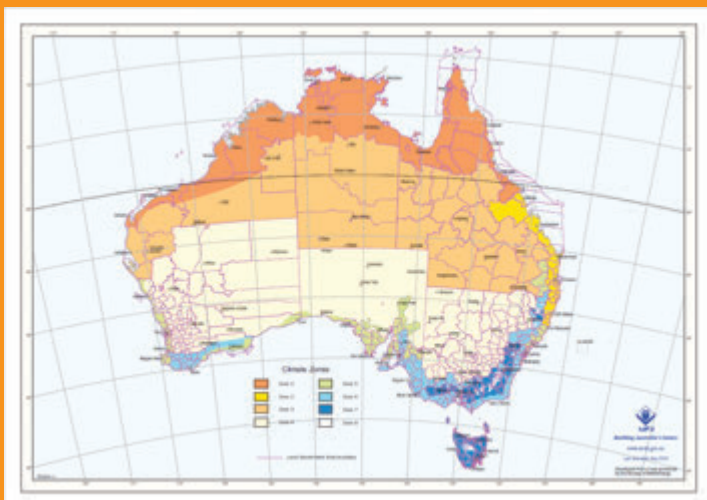
## Condensation Management

How to comply with:

Volume 1: F6.2

Volume 2: 3.8.7.2

### BCA Climate Zones



SuperStrong

SuperStrong Breather

SuperStrong **Permea**

**Product selection and applications.**



# NCC 2019

## Condensation Management

### How to comply with Volume 1: F6.2 and Volume 2: 3.8.7.2 Part (a)

Compliance with this clause is achieved with the installation of a pliable building membrane as follows:

Where a pliable building membrane is installed in an external wall, it must –

- (i) Comply with AS/NZS 4200.1; and
- (ii) Be installed in accordance with AS 4200.2; and
- (iii) Be a vapour permeable membrane for climate zone 6, 7 and 8; and
- (iv) Be located on the exterior side of the primary insulation layer of wall assemblies that form the external envelope of a building.

### How to comply with volume 2:3.8.7.2 part (b)

To comply with this clause there must be a drained cavity when no water barrier membrane is installed.

As standard Brick veneer construction includes a drained cavity by design, all Brick Veneer walls automatically comply when no water barrier membrane is installed.

However, external moisture ingress can be influenced by wind pressure and easily breach a drainage cavity to come into contact with water sensitive materials.

The use of a water barrier membrane with an appropriate level of permeability is always recommended, particularly if the membrane is being used during construction to allow internal works to progress as part of a reverse build program.

### Volume 23:3.8.7.2 part (b)

The condensation Management clause will only apply to wall wrap products that have water hold-out (water barrier) properties.

This means that a non-water barrier (or a perforated foil breather product) may still be installed onto an external wall frame in any climate zone, provided there is a drained cavity.

As Brick Veneer construction includes a drained cavity by default, this means that all Brick Veneers in any climate zone, may still use **CZ7 SuperStrong Breather** as it is a perforated non-water barrier product. Although, please note that perforated non-water barrier products do not meet cladding manufacturer's warranty terms and should not be used behind lightweight clad in any situation, even if a drained cavity has been included through battens. Behind lightweight cladding in Zone 1-5 use **CZ7 SuperStrong** and in Zone 6-8 use **CZ7 SuperStrong Permea**



**CZ7 SuperStrong** Roof and Wall Wrap gives extra protection for external building frame, providing a weather barrier with high water hold out. CZ7 SuperStrong is defined as a pliable building membrane, to be installed behind Brick Veneer in BCA Climate Zones 1 – 5 when complying with NCC 2019 clauses 3.8.7.2 (a).



### BCA CLIMATE ZONES 1 - 5

Construction Type Applications: **BRICK VENEER ONLY**

Product	Lenth 1m	Width mm	M2/ Per Roll	Product Code
SuperStrong	30	1350	40.5	SS30
SuperStrong	60	1350	81	SS60

**CZ7 SuperStrong PERMEA** is a white, fire retardant, absorbent, flexible, tri-laminated, synthetic non-woven building wrap. Installed over wall framing behind Brick Veneer and Lightweight Clad it provides the secondary protective weather resistant layer that combines high water hold out properties with high permeability which prevents the accumulation of moisture. Used in climate Zones 2 to 8 it complies with NCC 2019 clauses 3.8.7.2 (2)



### BCA Climate Zones 2 - 8

Construction Type Applications: **BRICK VENEER AND LIGHTWEIGHT CLAD**

Product	Lenth 1m	Width mm	M2/ Per Roll	Product Code
SuperStrong Permea	20	1350	27	SSP20
SuperStrong Permea	30	1350	40.5	SSP30

**CZ7 Superstrob Breather** (SSB) is a non-water barrier perforated foil wrap installed over wall framing behind Brick Veneer, providing a secondary protective weather barrier as a sarking material or reflective insulation when complying with NCC 2019 clause 3.8.7.2 (b).



### BCA Climate Zones 2 - 8

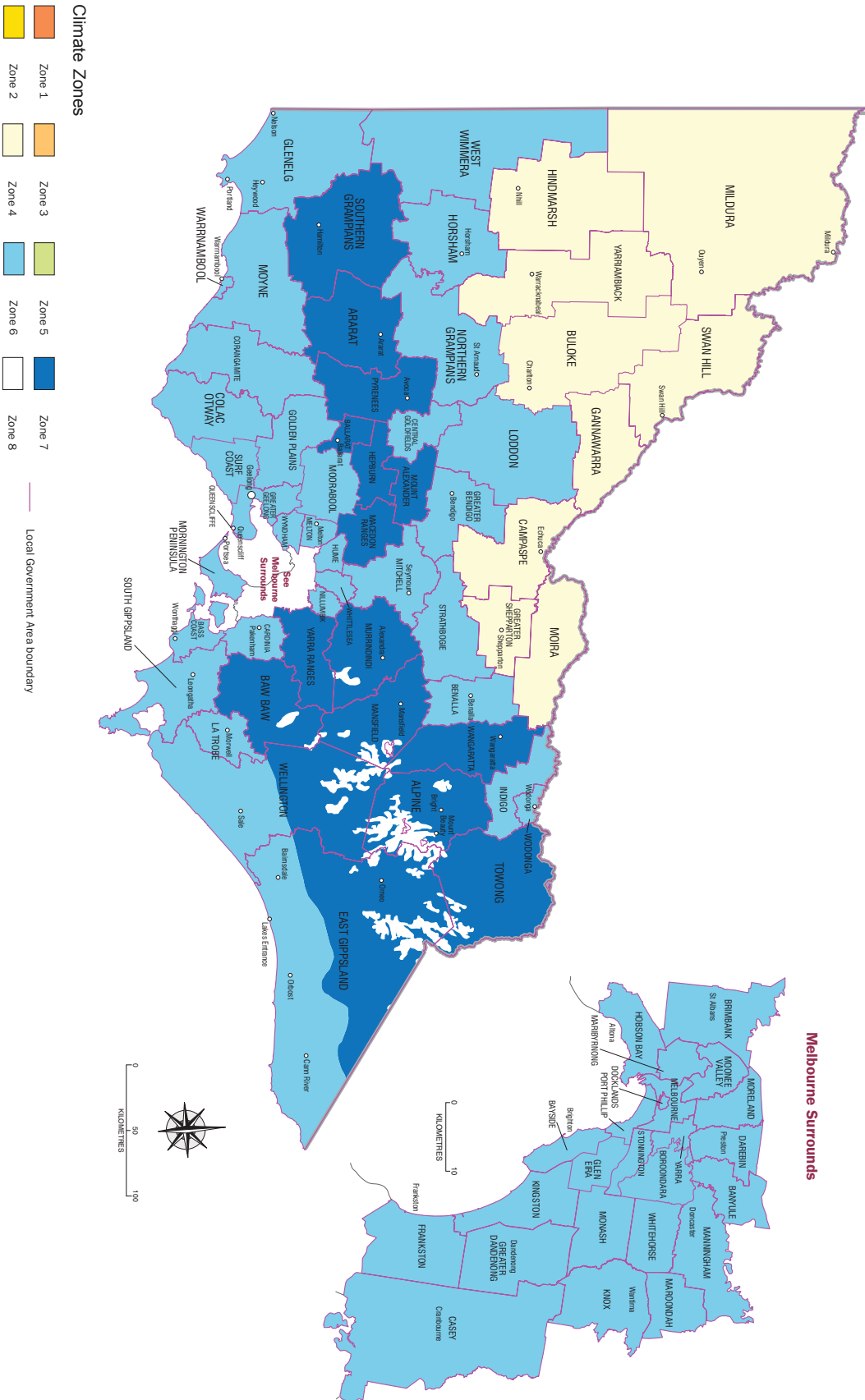
Construction Type Applications: **BRICK VENEER ONLY**

Product	Lenth 1m	Width mm	M2/ Per Roll	Product Code
SuperStrong Beather	20	1350	27	SSB20
SuperStrong Breather	60	1350	81	SSB60

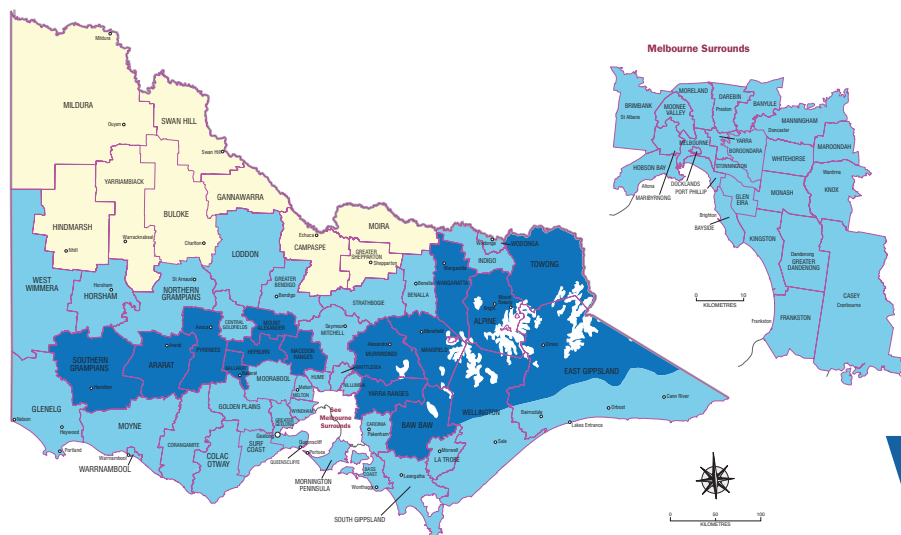




# BCA Climate Zones







# VICTORIA

Regional Melbourne	Climate Zone
Alpine	7 to 8
Ararat	7
Ballarat	7
Bass Coast	6
Baw Baw	7 to 8
Benalla	6
Cardinia	6
Central Goldfields	6
Colac Otway	6
Corangamite	6
East Gippsland	6 to 8
Glenelg	6
Golden Plains	6
Greater Bendigo	6
Greater Geelong	6
Hepburn	7
Horsham	6
Hume	6
Indigo	6
La Trobe	6
Loddon	6
Macedon Ranges	7
Mansfield	7 to 8
Melton	6
Mitchell	6



**National  
Construction  
Code**

Regional Melbourne	Climate Zone
Moorabool	6
Mornington Peninsula	6
Mount Alexander	7
Moyne	6
Murrindindi	7 to 8
Nillumbik	6
Northern Grampians	6
Pyrenees	7
South Gippsland	6
Southern Grampians	7
Strathbogie	6
Surf Coast	6
Towong	7 to 8
Wangaratta	7
Wellington 6 to 8	
West Wimmera	6
Whittlesea	6

Melbourne Surrounds	Climate Zone
Banyule	6
Bayside	6
Boroondara	6
Brimbank	6
Casey	6
Darebin	6
Docklands	6
Frankston	6
Glen Eira	6
Greater Dandenong	6
Hobson Bay	6
Kingston	6
Know	6
Manningham	6
Maribyrnong	6
Maroondah	6
Melbourne Surrounds	6
Monash	6
Moonee Valley	6
Port Phillip	6
Stonnington	6
Whitehorse	6
Yarra	6



**SS30**  
**SS60**

## Heavy Duty SuperStrong Antiglare Finish

This product meets the requirements of AS/NZ 4200.1 and is suitable for use in Australian residential applications.

### Description:

SuperStrong consists of a layer of aluminium reflective foil laminated to a woven polypropylene mesh to form a rugged, durable aluminium foil insulation product.

### Vapour and Condensation

Roof and Wall wrap gives extra protection for external building frame. Providing a weather barrier with high water hold out.

CZ7 SuperStrong is defined as a pliable building membrane, to be installed behind Brick Veneer in BCA Climate Zones 1 -5 when complying with NCC 2019 clauses 3.8.7.2 (a)

### Durability:

The combination of woven polypropylene fabric laminated to aluminium reflective foil provides a highly durable pleasing to handle membrane

### Flame Retardant:

When tested in accordance with AS 1530 part 2 SuperStrong has a Flammability Classification of – (Low)

### Supplied by:

### Physical Properties:

Classification in accordance with AS/NZS 4200.1

This product should be installed in accordance with AS4200.2S

### CRITERIA

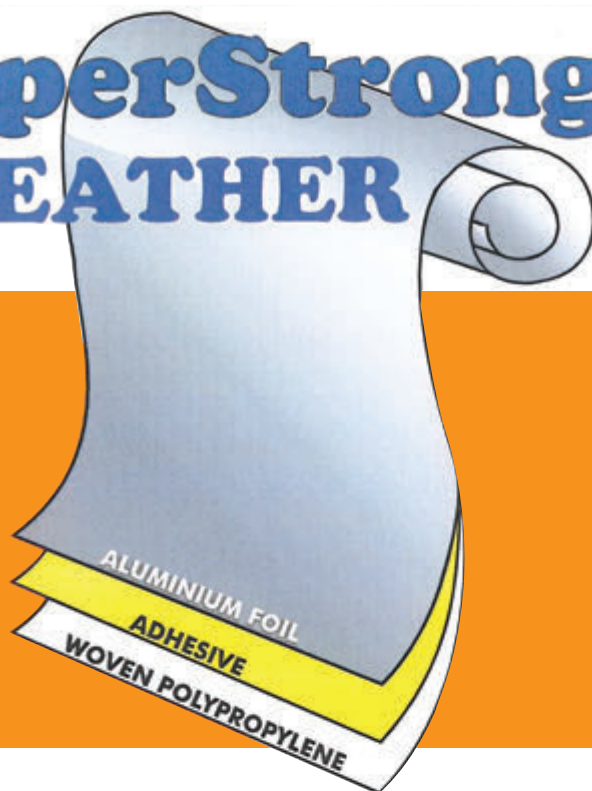
Product Identifier	SuperStrong
Duty Classification (AS/NZS 4200.1)	Heavy Duty
Tensile strength (AS/NZS 1301.448s)	>17.0
	>17.2
Edge Tear Resistance (Tappi T470)	>90
	>90
Water Control Classification (AS/NZS 4201.4)	Water Barrier
Vapour Classification (ASTM E96)	Class 2
Vapour Permeability (ASTM E96)	<0.003
Emissivity (AS 4201.5)	Reflective (0.05)
	Non-Reflective (0.96)
Flammability Index (AS 1530.2)	<5 (Low)
Electrical Conductivity (AS/NZS 3100)	Conductive
Resistance to Dry Delamination (AS/NZS 3100)	Conductive
Resistance to Dry Delamination (AS/NZS 4201.1)	Pass
Resistance to Wet Delamination (AS/NZS 4201.2)	Pass
Shrinkage (AS/NZS 4201.3)	<0.5%
Nominal Thickness	<1.0mm

Width mm	Length Lm	Area M2	Approx. Weight Kg	Product Code
11350	30	40.5	5.5	SS30
1350	60	81	11	SS60

# SuperStrong BREATHER

**SSB30**  
**SSB60**

**Heavy Duty  
SuperStrong  
Antiglare Finish**



This product meets the requirements of AS/NZ 4200.1 and is suitable for use in Australian residential applications.

#### Description:

SuperStrong Breather (SSB30, SSB60) consists of a layer of aluminium reflective foil laminated to a woven polypropylene mesh to form a rugged, durable aluminium product.

#### Vapour and Condensation

this product is not a water barrier and allows air transfer. It is not recommended for lightweight clad applications and its suitability should be checked with the cladding manufacturer prior to application. Compliance to AS/NZS 4200.1 -2017 Clause 5.3.4 Water Vapour – Class 2

#### Durability

The combination of woven polypropylene fabric laminated to aluminium reflective foil provides a highly durable pleasing to handle membrane

#### Flame Retardant:

When tested in accordance with AS 1530 part 2 SuperStrong Breather (SSB30, SSB60) has a Flammability Classification of – (Low)

#### Supplied by:

#### Physical Properties:

Classification in accordance with AS/NZS 4200.1

This Product should be installed in accordance with AS4200.2

#### CRITERIA

Product Identifier	SuperStrong Breather
Duty Classification (AS/NZS 4200.1)	<b>Heavy Duty</b>
Tensile strength (AS/NZS 1301.448s)	>17.0
	>17.2
Edge Tear Resistance (Tappi T470)	>90
	>90
Water Control Classification (AS/NZS 4201.4) Non - Water Barrier	<b>Water Barrier</b>
Vapour Classification (ASTM E96)	<b>Class 2 vapour Barrier</b>
Vapour Permeability (ASTM E96)	<0.1429 ug/N.s
Emissivity (AS 4201.5)	Reflective (0.05)
	Non-Reflective (0.96)
Flammability Index (AS 1530.2)	<5 (Low)
Electrical Conductivity (AS/NZS 3100)	<b>Conductive</b>
Resistance to Dry Delamination (AS/NZS 3100)	<b>Conductive</b>
Resistance to Dry Delamination (AS/NZS 4201.1)	<b>Pass</b>
Resistance to Wet Delamination (AS/NZS 4201.2)	<b>Pass</b>
Shrinkage (AS/NZS 4201.3)	<0.5%
Nominal Thickness	<1.0mm

Width mm	Length Lm	Area M2	Approx. Weight Kg	Product Code
11350	30	40.5	5.5	SS30
1350	60	81	11	SS60



# SuperSTRONG Permea



## SSP20 & SSP30

# Vapour Permeable Wall Wrap Light Wall

A tough weather barrier

Minimise the risk of condensation related mould growth  
Suitable behind both brick veneer and all lightweight clad

**CZ7 SuperStrong PERMEA** is a white, fire retardant, vapour permeable, absorbent, flexible, tri-laminate, synthetic non-woven building wrap. Installed over wall framing it provides the secondary protective weather resistant layer which prevents the accumulation of moisture.

**CZ7 SuperStrong PERMEA** is engineered from resilient non-woven fabric and is a commercial grade building underlay. It has a high resistance to moisture and is perfectly suited for residential and commercial buildings with high-permeable moisture transfer requirements.

**CZ7 SuperStrong PERMEA** can be installed over timber and steel framing. It is also an air barrier that allows for high moisture vapour transfer creating a healthier and more energy-efficient structure for projects in wet or cold climates and/or for projects requiring high vapour permeability, reducing the risks of condensation and mould growth.

### Water Resistant

Provides a high resistance to moisture while restricting air movement within the wall cavity.

### Air Barrier & Vapour Permeable

A specialized air barrier material allows for the highest moisture vapour transfer creating a healthier more energy – efficient structure for projects in wet and cold climates. It is tailored for projects requiring higher levels of permeability and minimizes the probability of condensation build-up.

### Australian building code and requirements

Meets and exceeds AS/NZS 4200 requirements. It can be used for both commercial and residential applications.

### Strength

It is extremely robust and will remain fastened for longer.

### Energy Efficient

Creates a healthier more energy efficient structure due to its specialized air barrier and vapour permeable material.

### Tough

Lightweight yet durable. It is translucent making locating studs, openings and corners quick and easy.

### Maintenance

CZ7 SuperStrong PERMEA does not require any maintenance but when exposed through removal of cladding, the wrap must be inspected and any damaged areas repaired or replaced.

### Storage & Transportation

CZ7 SuperStrong PERMEA rolls must be stored in a clean, dry place and must be protected from damage and weather. CZ7 SuperStrong PERMEA must not be exposed to UV light for more than 60 days.

# SuperSTRONG Permea



## SSP20 & SSP30 Vapour Permeable Wall Wrap Light Wall

A tough weather barrier

Minimise the risk of condensation related mould growth  
Suitable behind both brick veneer and all lightweight clad

Criteria	Reference	Superstrong PERMA
Duty Classification	AS/NZS 4200.1:1994	Light Wall
Vapour Permeability	ASTM E96	5.0ug/N.s
Vapour Resistance	ASTM E96	0.20MN.s/g
Vapour barrier Classification	ASTM E96	Low
Emittance	AS/NZS 4201.5	Non-Reflective
Water Barrier	AS/NZS 4201.4	High
Absorbency	AS/NZS 4201.6	Unclassified
Resistance to Dry Delamination	AS/NZS 4201.1	Pass
Resistance to Wet Delamination	AS/NZS 4201.2	Pass
Shrinkage	AS/NZS 4201.3	<0.5%
Tensile Strength	AS 1301.448	4.94 kN/m 2.47 kN/m
Machine Direction (k/Nm)		
Lateral Direction (k/Nm)		
Edge Tear Strength	TAPPI T470	244 N 126N
Machine Direction (N)		
Lateral Direction (N)		
Burst Strength	AS 2001.2.19	>200N
Flammability Index	AS/NZS 1530 Part 2	≤ 5
Allowable UV exposure prior to completion of cladding	ASTM G154	60 days

Supplied By

Width mm	Length LM	Area M2	Approx Weight Kg	Product Code
1350	20	27	0.0	SSP20
1350	30	40.5	0.0	SSB30

[illegible]



# **climate zone 7**

**i n s u l a t i o n**

## **Supply & Install**

Cellulose Fibre, Earth Wool Batts, Fibreglass Batts  
EHD Foil, Acoustic Batts, Flashing, Silver Floor  
Weather Wraps

All Other products Are Also In Stock

**6 Network Drive, Carrum Downs Vic 3201**

**Factory 2/8-10, Clarendon Road, Drysdale Vic 3222**

**P 03 9708 2359**

**F 03 9775 1181**

**E [jared@climatezone7.com.au](mailto:jared@climatezone7.com.au) W [www.climatezone7.com.au](http://www.climatezone7.com.au)**